



**ULMA Packaging**

Thanks to 50 years' experience, we are a worldwide reference in the design and manufacturing of high-technology packaging equipment and systems.

50 years of progressing, innovating and perfecting our technology and services. A wide network at your service to offer you solutions all over the world and to give full satisfaction to anyone who places his trust in us.

For more information, please see our website:

[www.ulmapackaging.com](http://www.ulmapackaging.com)

C0171

Global Packaging



ULMA Packaging, S. Coop.  
 B° Garibai, 28 - Apdo. 145  
 20.560 OÑATI (Gipuzkoa) SPAIN  
 Tel.: +34 - 943 73 92 00  
 Fax: +34 - 943 78 08 19  
 Web: [www.ulmapackaging.com](http://www.ulmapackaging.com)  
 e-mail: [info@ulmapackaging.com](mailto:info@ulmapackaging.com)

**SLEEVE WRAPPING**  
 Shrink

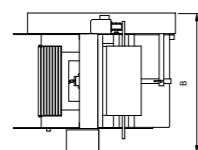
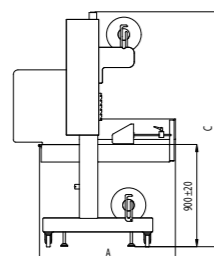
# Automatic Sleeve Wrappers

## ▶ SVS

Semi-automatic sleeve wrapper with manual load of the product in front of the pusher, inserting and sealing pneumatically by two pushers. The manual load makes it very versatile, making it possible to sleeve wrap almost any product.



	A	B	C
SVS 60	1.200 mm	1.250 mm	2.050 mm
SVS 80	1.200 mm	1.450 mm	2.050 mm
SVS 100	1.200 mm	1.650 mm	2.050 mm

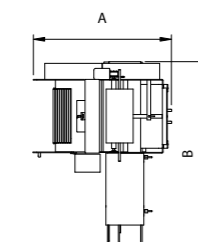
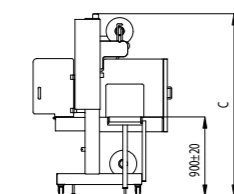


## ▶ SVA 90°

Automatic sleeve wrapper with a 90° in-feed motorised conveyor and feeder device. The maximum speed depends on the characteristics of the package and the group.



	A	B	C
SVA 90° 60	1.320 mm	2.175 mm	2.050 mm
SVA 90° 80	1.320 mm	2.375 mm	2.050 mm
SVA 90° 100	1.320 mm	2.575 mm	2.050 mm

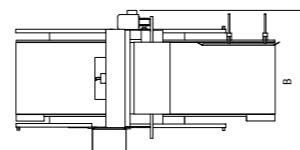
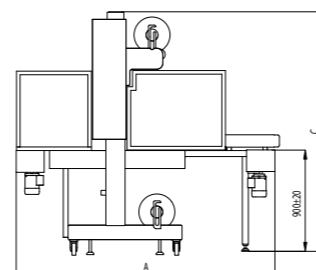


## ▶ SVAL

Automatic in line sleeve wrapper with two motorised product in-feed and out-feed belts. It is a system that combines versatility with easy adjustment, and the ability to work with products of any length.



	A	B	C
SVAL 60	2.165 mm	1.250 mm	2.050 mm
SVAL 80	2.680 mm	1.450 mm	2.050 mm
SVAL 100	2.680 mm	1.650 mm	2.050 mm

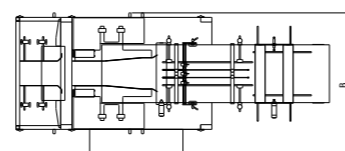
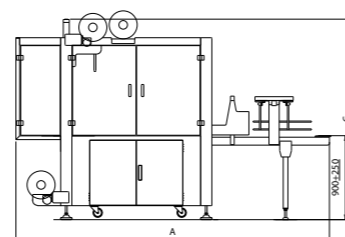


## ▶ EPB

Automatic in line sleeve wrapper specially designed for grouping bottles and cans at high speeds.



	A	B	C
EPB	3.360 mm	1.600 mm	2.150 mm



The range of **ULMA sleeve wrapping machines**, of modular design, is made up of four models used for wrapping with flat shrink film, a wide array of individual and group products, resulting in packages that are completely or partially closed by using two cross sealed film rolls.

### STANDARD EQUIPMENT:

- ▶ In-feed belt with adjustable speed for the automatic product loading (SVAL, SVA 90°, EPB).
- ▶ Motorised upper and lower reel holders.
- ▶ Film sealing and cutting system through an easily-replaced, teflonised hot bar with electronic temperature adjustment via a digital display.
- ▶ Pneumatic closing of the sealing clamp.
- ▶ Sealing bar safety system in order to protect the operator and/or the product.
- ▶ Pneumatic presser on the out-feed table in order to hold the product during the cutting and sealing process.
- ▶ Easy to operate, intuitive control panel.

### CONSTRUCTION FEATURES:

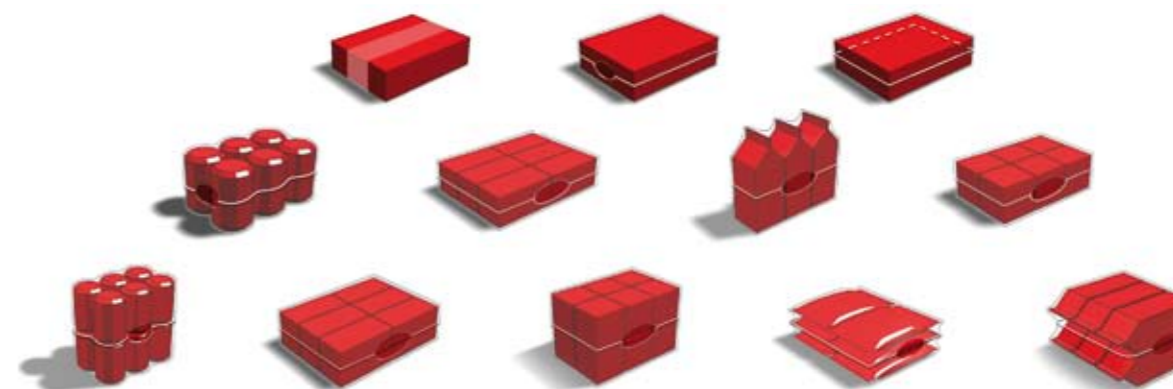
- ▶ Machine of modular design. Heavy duty frame built in painted and laminated steel tubes.
- ▶ Adjustable height legs and wheels for transport and positioning.

- ▶ Right to left machine operation.
- ▶ Protection and safety systems according to CE standards.

### OPTIONS:

- ▶ Double reel holders.
- ▶ Out-feed belt in accordance with the application.
- ▶ Four-seal system for a complete close, with or without width adjustment, through lateral sealing bars as well as continuous sealing.
- ▶ Centred printing system.
- ▶ Special dimensions of the in-feed and out-feed belts.
- ▶ Upper reel holder placed on the lower side.
- ▶ Film dragging for light products.
- ▶ Centred sealing.
- ▶ Film for bubble for double sleeve wrapping, depending on the product.
- ▶ Package counter.
- ▶ End of film detection with beacon.
- ▶ Automatic switch on and off.
- ▶ Left to right machine operation.
- ▶ Stainless steel version.
- ▶ Customization according to the application.

### TYPES OF PACKAGE



### TECHNICAL FEATURES

	SVS	SVAL	SVA 90°	EPB
SEALING CLAMP DIMENSIONS	60 · 80 · 100	60 · 80 · 100	60 · 80 · 100	70
TYPES OF FILM	Polyethylene (LDPE)			
MAXIMUM REEL DIMENSIONS	Ø 400x600 / Ø 400x800 / Ø 400x1.000			Ø 300x650
TYPE OF REEL	Flat			
ELECTRICAL SPECIFICATIONS	Voltage 400 v. - Three phase + Neutral + Earth - 50/60 Hz			
	Power installed	1,25 kw	3,5 kw	3,5 kw
PNEUMATIC CONSUMPTION	250 - 500 l/min			
WEIGHT	270-832 Kg.			

ULMA reserves the right to change the specifications without prior notice.

SLEEVE WRAPPING  
**SLEEVE WRAPPING**